

社會科地理－融入式雙語教學

授課教師：武漢國中 何家儀
法國藝術家 Chris



Which country does Chris come from?



London bridge 倫敦鐵橋



Louvre museum 羅浮宮

法國藝術家 Christopher Boyd



i OFTEN THINK OF MY ADVENTURES
AND TEACHING IN TAIWAN...





問候語

法語

Bonjour = 你好

Merci = 謝謝

Oui = 對

Au revoir = 再見

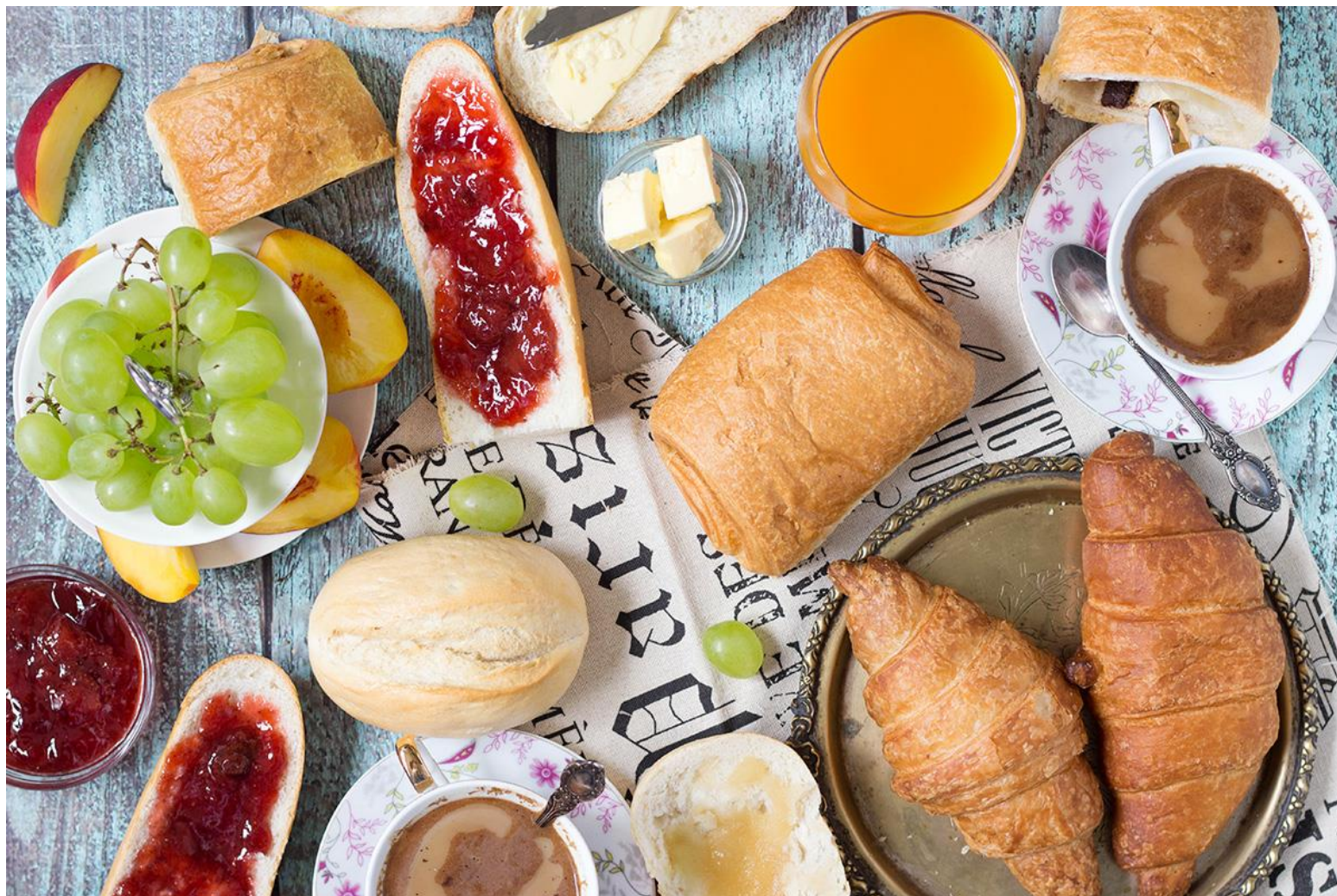
What time is it in France now?



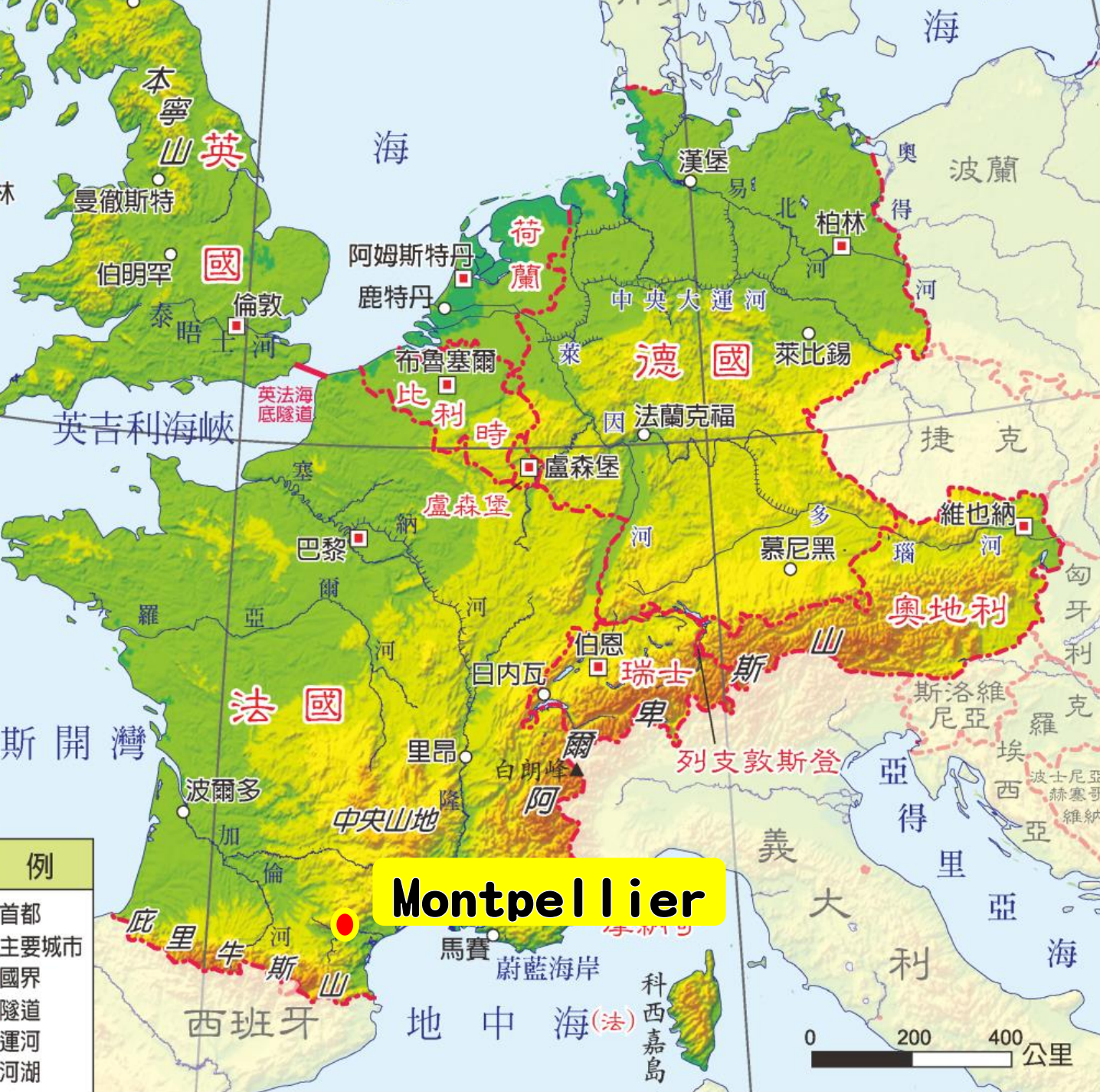
PARIS

- **Hint 1:** The France uses the Central European Time(歐洲中部時間)
- **Hint 2:** Central European Time(歐洲中部時間) is a time zone faster than the London time zone 1 hour.
- **Hint 3:** Before 10/27, France is on the daylight time(夏令時間) so the time in France is faster than usual for 1 hour.

What do French usually eat in the morning?

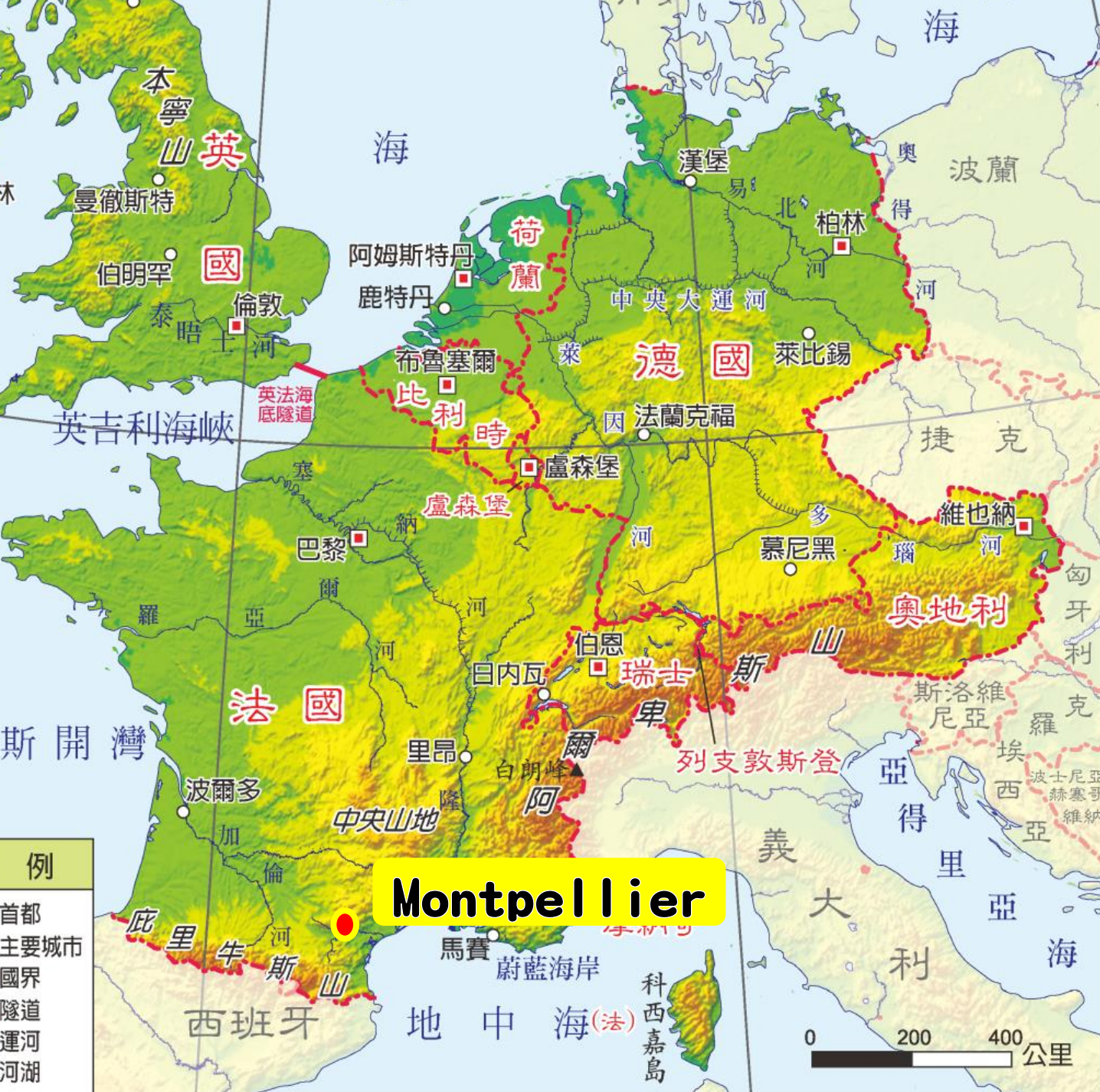


Croissant 可頌

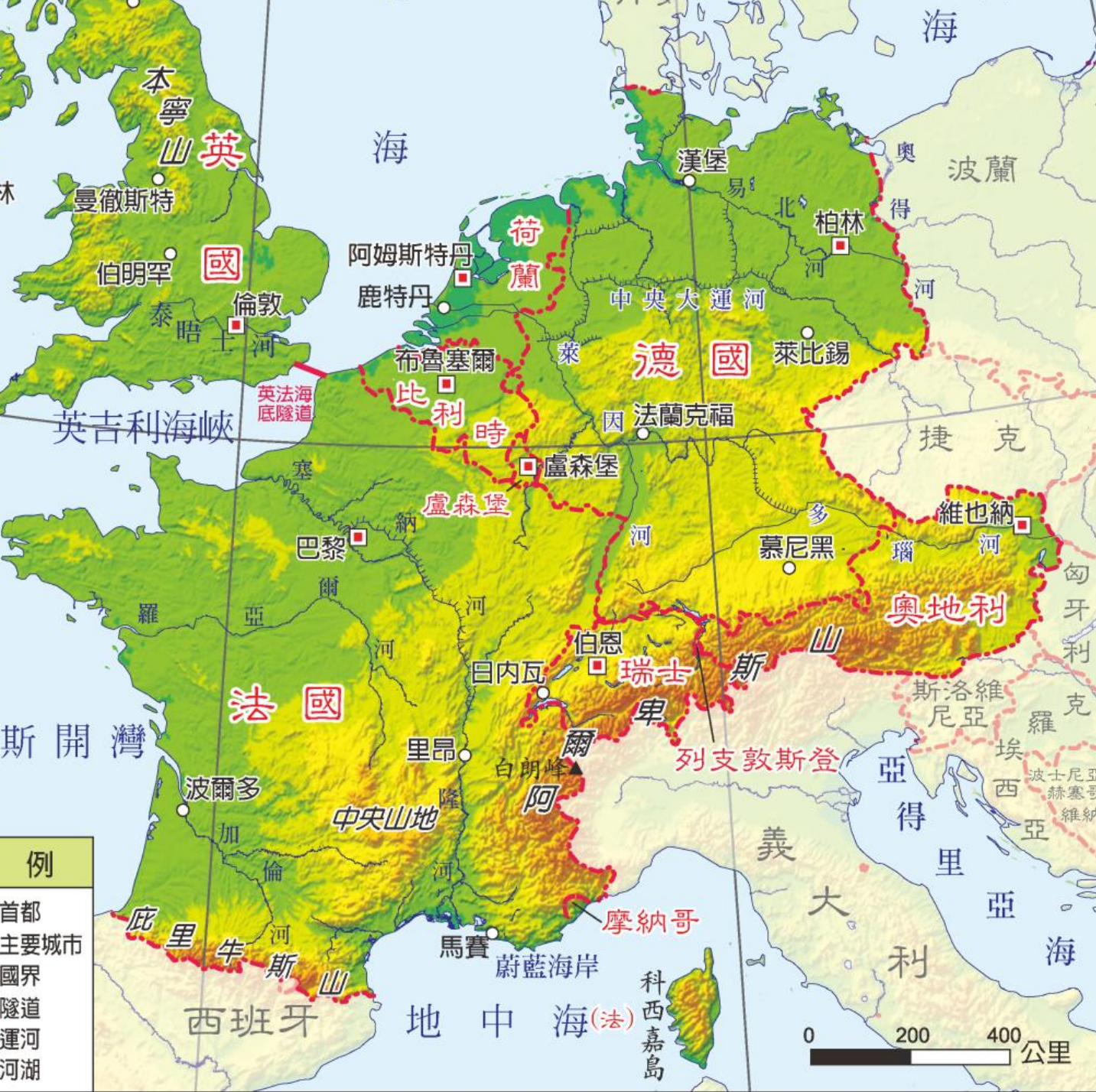


Where is Chris's hometown?

- Montpellier



Where is the climate in the Montpellier?



•Montpellier

Mediterranean climate
地中海型氣候

Montpellier 蒙彼利埃



Montpellier 蒙彼利埃 — flamingo紅鶴

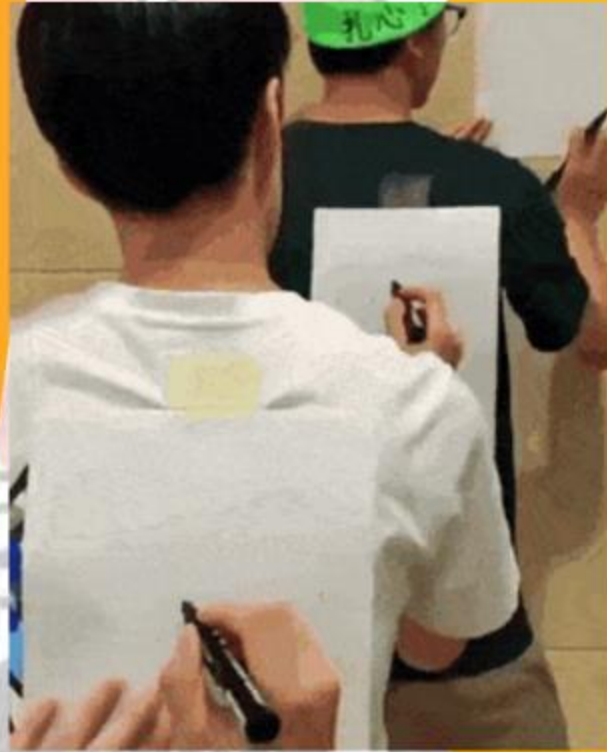


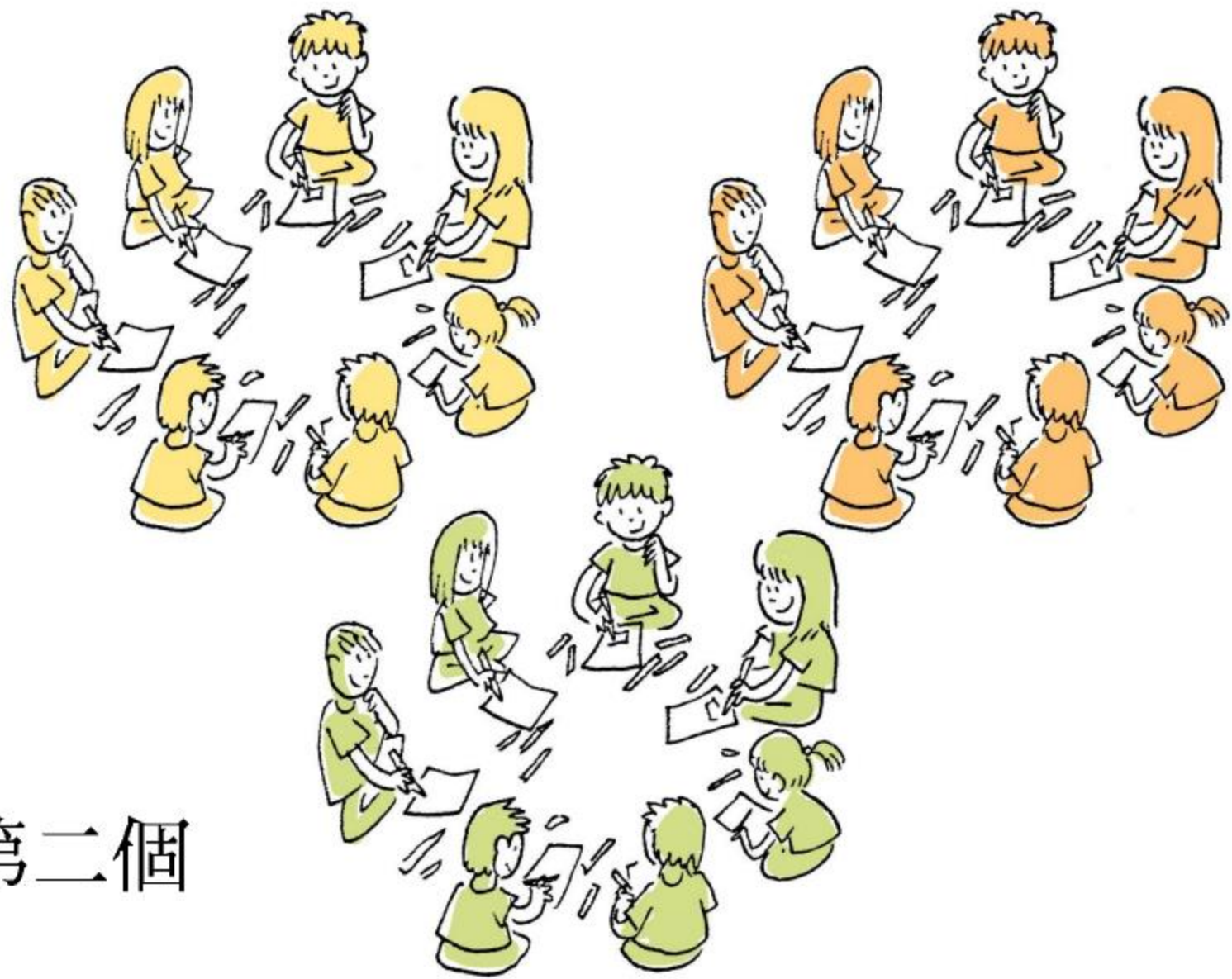
Montpellier蒙彼利埃-limestone cave 石灰岩洞穴





下一個

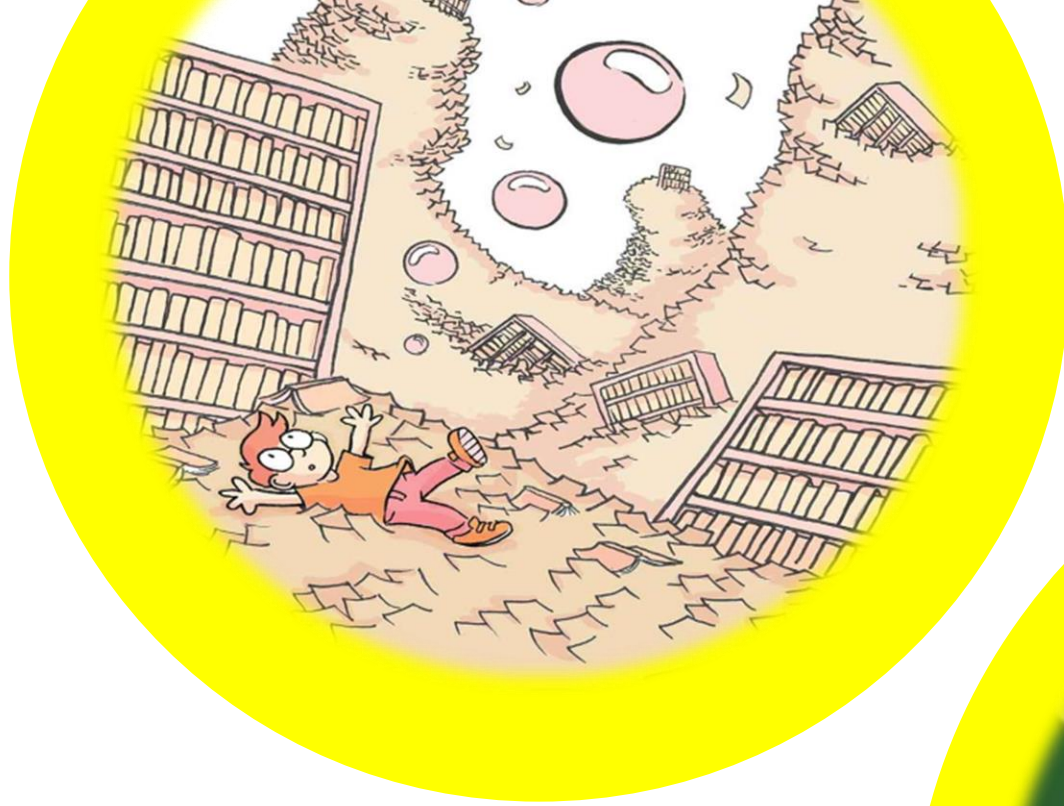




第二個



影片



Thanks for Chris!!!!!!

