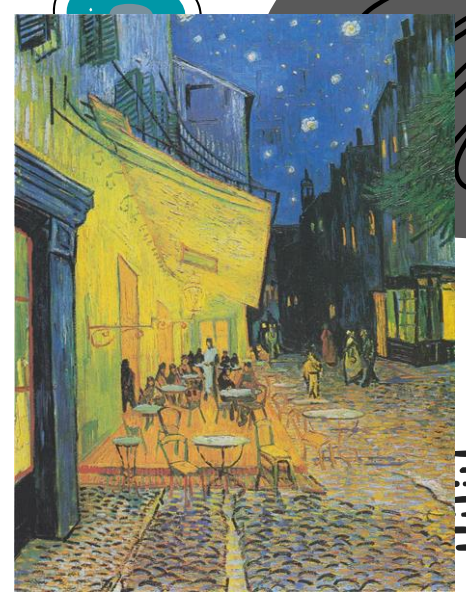


B2L3



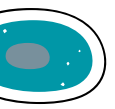
Which painting do you like?



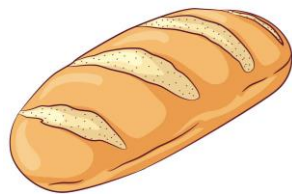
xxx

# sentence pattern 1

xxx.



# Example



Which do you like \_\_\_\_\_ or \_\_\_\_\_?



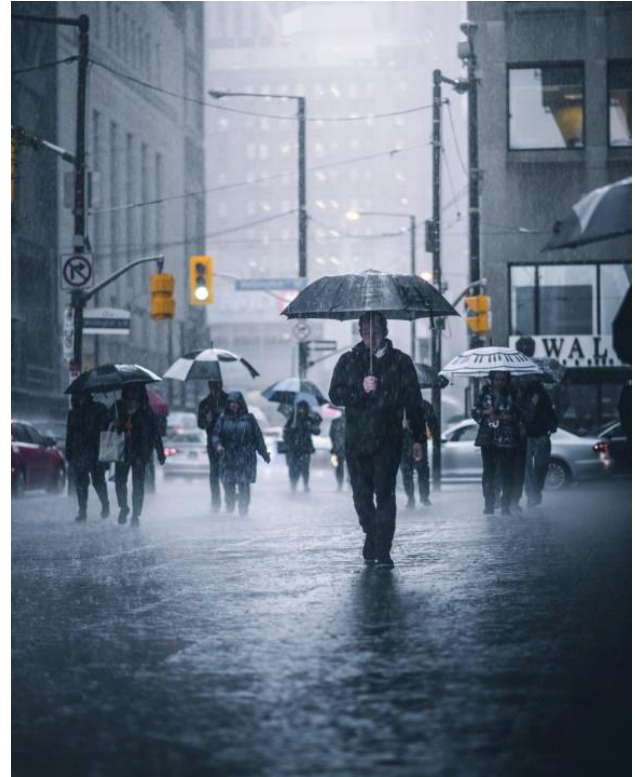
I like \_\_\_\_\_.

Which do you like, banana or kiwi?



I like \_\_\_\_\_.

Which do you like, sunny day or rainy day?



I like \_\_\_\_\_.

# Which do you like, summer or winter?



I like \_\_\_\_\_.

Which do you like, meat or vegetable?



I like \_\_\_\_\_.

Which do you like, meatball or oyster pancake?



I like \_\_\_\_\_.

Which do you like, dog or cat?



I like \_\_\_\_\_.

# Which do you like, sweet food or salty food?



I like \_\_\_\_\_.

Which do you like , Japan or Korea ?



I like \_\_\_\_\_.

Which **does** he like, bus or train?



He likes \_\_\_\_\_.

Which **does** she like, cookies or chips ?



She likes \_\_\_\_\_.

Which **does** she like, Chinese or English ?



She likes \_\_\_\_\_.

Which **does** Tom like, taking a shower or taking a bath ?



He likes \_\_\_\_\_.

Which **does** Amy like, strawberry cake or  
cheese cake ?



She likes **s** \_\_\_\_\_.

xxx.

# Speaking Activity

